

Stormcovers can be manufactured for all types of RV's

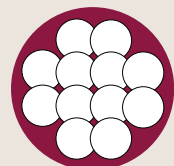


stormcovers

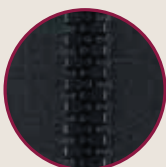
*Buy with Confidence from the original Hail Protection RV Cover manufacturer
Only the finest quality manufacturing components are used in Stormcovers.*



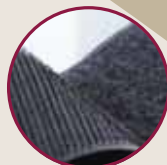
Commerical polyfabric exterior; laminated with state of the art UV inhibitors



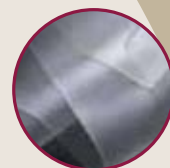
Specially manufactured closed cell foam inner lining, treated with mould and mildew inhibitors



Super strong heavy duty zippers, finest quality available



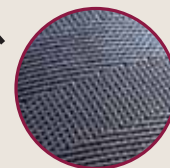
Zippered section is protected by hook and loop and covered with webbing



Inner foam lined with highly tear proof film for maximum strength



No Seams across roof line or sides, durable construction from 3 solid panels



Super strong polyester webbing

Multiple securing points with side release buckles and strong webbing, 16 securing points available on each Stormcover



Bonded Polyester thread with maximum UV resistance, strong and durable in all outdoor conditions



Stormcovers are made to order for all types of RV's. Please note that Camper Trailer Stormcovers are not 3 piece zip on covers.

Stormcovers are the original Hail Protection Cover for all types of RV's, designed and manufactured in Australia.

Stormcovers offer triple layer protection, the outer layer is a commercial grade polyfabric designed and tested under Australia's harsh UV conditions. The inner foam layer is specially manufactured and treated to resist mould and mildew growth, and the third bonded coating to the foam makes Stormcovers durable and tough.

- ✓ *The Original Hail and Storm Protective cover*
- ✓ *The Toughest and most Durable RV Cover*
- ✓ *Follows the contours and shaping of your RV*
- ✓ *Unique 3 piece zip on design*
- ✓ *Triple layer protection*
- ✓ *Manufactured in Australia for Australian conditions*
- ✓ *Tried, Tested and Trusted for more than 8 years*

STORMCOVER FITTING INSTRUCTIONS



1)
Unpack the Storm-
cover roof and sides
next to your Caravan
or Motorhome



2)
Roll the Roof Section
over the roof of your
Caravan or
Motorhome



3)
Secure the roof
section in position
with the straps sewn
onto the Stormcover

STORMCOVER FITTING INSTRUCTIONS



4)
Zip the sides of the Stormcover onto the roof section and press down hook and loop protective strip



5)
If you have ordered a separate door panel this can be fully zipped out for easy RV access



6)
For complete RV coverage separate draw bar covers can be made for your Caravan or Motorhome